

## Support for SQL Server 2014 (New)

- SCC Web Access Module 9 now supports the use of SQL Server 2014 on the Windows 2012 R2 Server platform.

## Object Level Access Rights Management (New)

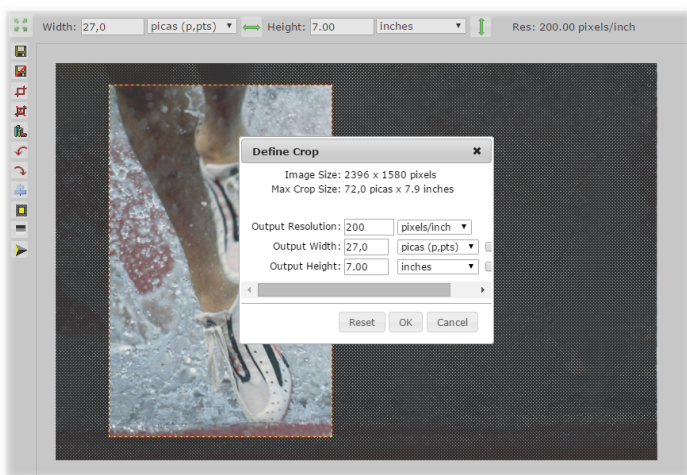
- SCC MediaServer 9 Enterprise and Cloud Edition systems now support Object Level Access permissions, providing user rights management at the individual record level.
- Each object record is provided a set of object tokens, which correspond to functions (preview, crop, protect, edit, print, download, deliver, delete) that can potentially be performed on each object using an SCC client application.
- The SCC user manager and SCC Active Directory snap-in utility allows these Object Access (OA) tokens to be assigned either at the role level, or individually per user.
- Upon login into the SCC MediaServer system, users carrying the relevant tokens are able to perform the corresponding functions to the OA tokenized record, while others are not.

## Ancillary License Pools (New)

- SCC MediaServer 9 Enterprise and Cloud Edition systems add support for Ancillary License Pools (ALPs) allowing for additional sets or groups of power and lightweight users, independent of the SCC MediaServer primary license pool.
- SCC MediaServer user/role accounts are created and defined in the User Manager and/or AD Snap-In utility. In MediaServer 9 roles also define whether its users are in the Primary License Pool (the default for existing roles) or one of the available Ancillary License Pools (if any).
- SCC Web Access Module 9 adds support for MediaServer 9 Ancillary License Pools.

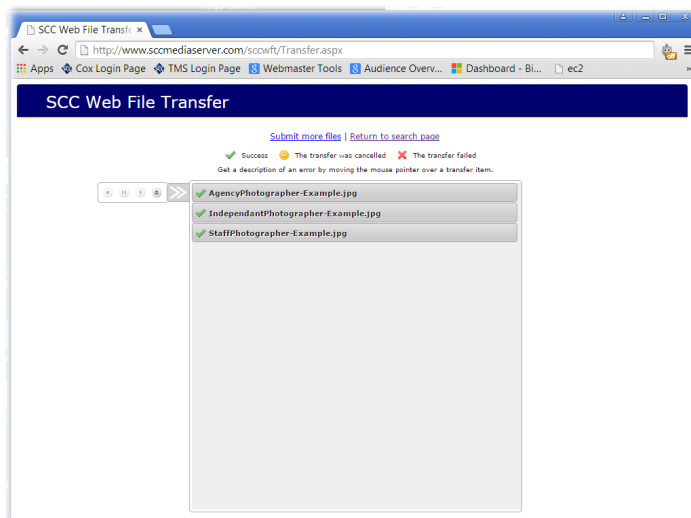
## HTML5 Crop Applet (New)

- SCC Web Access Module 9 includes a new HTML5 crop applet, which is compatible with all modern Web browser applications.



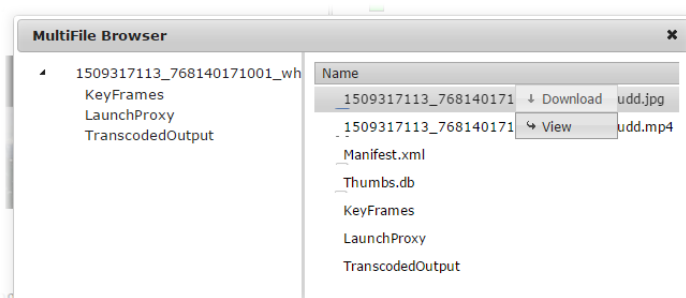
## HTML5 Content Upload Applet (New)

- SCC Web Access Module 9 includes a new HTML5 content upload applet, which is compatible with all modern Web browser applications.



## HTML5 MultiFile Browser Applet (New)

- SCC Web Access Module 9 includes a new HTML5 MultiFile Browser applet, which is compatible with all modern Web browser applications.



## Color Management Facility (New)

- SCC MediaServer 9 Express, Enterprise and Cloud Edition systems now support an advanced color management feature set which greatly enhances the display quality of HiRes preview images on MediaServer client monitors, and which can also be used to embed critical color profile data into JPEG images converted from RAW digital camera files for improved downstream production processing.
- Existing ICC profiles contained within images inserted into the SCC MediaServer system are now automatically extracted and applied to the HiRes preview generated automatically as part of the insertion process.
- RAW digital camera images that do not already contain an embedded ICC profile are automatically matched, based on camera make and model, with a corresponding ICC profile.
- The RAW digital camera color matching facility supports ICC profiles from Adobe or sourced separately from PhaseOne.

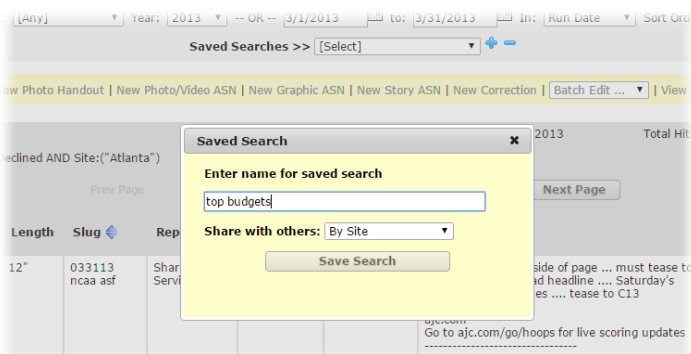
- SCC Web Access Module 9 automatically applies the relevant ICC profile to HiRes image previews and to printed images when a modern web browser that supports color management is in use.

## Isolation Proxy Security Mode (New)

- SCC Web Access Module 9 adds support for the SCC MediaServer 9 Isolation Proxy security facility.

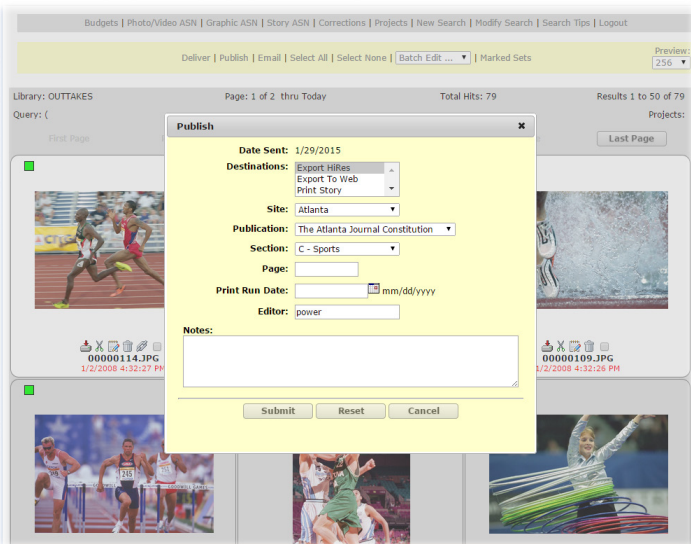
## Saved Search Facility (Enhanced)

- The SCC Web Access Module 9 Saved Search facility now includes the option to share saved searches with other users within the same Site, Role or Newsroom or to keep saved searches private to the user as in previous versions.



## Inline Delivery Forms (Enhanced)

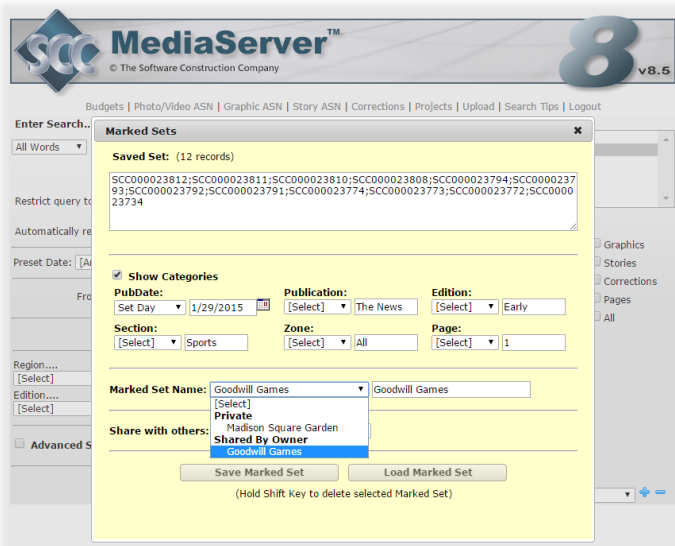
- SCC Web Access Module 9 now supports inline Delivery forms, allowing the user to maintain current position within search results after the delivery command has completed.



## Marked Sets (New)

- The SCC Web Access Module 9 now supports rapid marking of individual cells from a search result grid, either for the purpose of executing a Delivery/Publish command on the active marked set, or for inclusion within or exclusion from one or more saved Marked Sets.
- Clicking anywhere on the search result cell background (grid mode) and pressing the space bar will add the record to the active Marked Set. Repeating the process on the same record will remove it from the active Marked Set.

- Marked Sets can be saved within category folders (PubDate, Publication, Edition, Section etc.) and saved private to the user or optionally shared with other users within the same Site, Role or Newsroom.



## Delivery Commands (Enhanced)

- SCC Web Access Module 9 Delivery commands now support two new Delivery functions - Delivery Issuer and Delivery Issuer Email.
- Delivery Issuer allows the login name of the user that issued the delivery command to be included in the delivery output. For example records could be delivered to a target folder named automatically with the users name.
- Delivery Issuer Email allows the email address of the user that issued the delivery command to be automatically extracted from Active Directory and included in the delivery output for use in downstream processing.

## Cloud Storage Module (Enhanced)

- SCC Web Access Module 9 when connected to SCC MediaServer 9 now supports retrieval of HiRes Previews and Objects from Amazon S3 blob storage. This is in addition to Windows Azure blob storage supported previously.

## AV Module (Enhanced)

- SCC Web Access Module 9 when connected to SCC MediaServer 9 now supports playback of audio files in addition to video files via the integrated SCC Web AV player.

