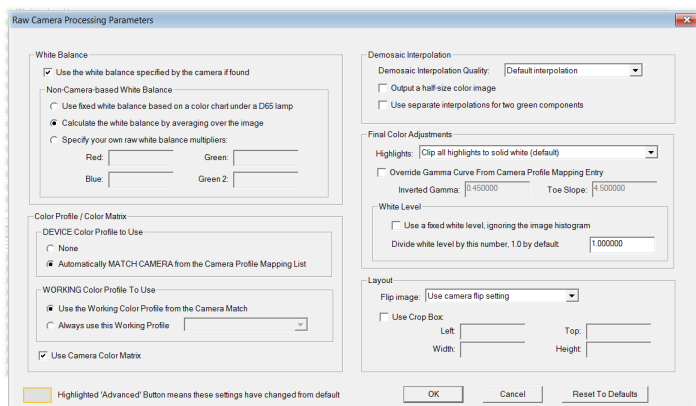


Support for SQL Server 2014 (New)

- SCC MediaFactory 9 now supports the use of SQL Server 2014 on the Windows 2012 R2 Server platform.

Color Management Facility (New)

- SCC MediaFactory 9 Image Conversion and Inserter channels now include support for the MediaServer 9 color management facility, which embeds critical color profile data into HiRes JPEG and HiRes Preview images generated from RAW digital camera files for improved preview rendering and downstream production processing.



- Existing ICC profiles contained within images inserted into the SCC MediaServer system are now automatically extracted and applied to the HiRes preview generated automatically as part of the insertion process.
- RAW digital camera images that do not already contain an embedded ICC profile are automatically matched, based on camera make and model, with a corresponding ICC profile.
- The RAW digital camera color matching facility supports ICC profiles from Adobe or sourced separately from PhaseOne.
- In addition to screen rendering of images, when printing HiRes or HiRes preview images that contain embedded color space profiles, SCC MediaFactory 9 now automatically transforms the color space of the image using the printer's device profile.

AV Module (Enhanced)

- SCC MediaServer 9 Enterprise and Cloud Edition systems equipped with SCC's AV module now support a range of Audio formats for insertion into SCC MediaServer 9 Enterprise and Cloud Edition systems.
- SCC MediaFactory 9 Inserter channels now support the extraction of embedded Adobe XMP metadata from Audio and Video files captioned using Adobe Bridge (or with any application capable of embedding XMP metadata within AV files).

Object Level Access Rights Management (New)

- SCC MediaServer 9 Enterprise and Cloud Edition systems now support Object Level Access permissions (preview, crop,

protect, edit, print, download, deliver, delete), providing user rights management at the individual record level.

- SCC MediaFactory 9 Inserter Channels now support the inclusion of Object Access Tokens within each new record inserted into the SCC MediaServer 9 system.
- SCC MediaFactory 9 ServerOPs channels now support the inclusion of Object Access Tokens into existing MediaServer 9 records that meet the necessary search criteria and constraints defined by each ServerOPs channel.

Various Channels (Enhanced)

- SCC MediaFactory 9 channels that receive file input from folders now provide the ability to ignore zero-length files. This avoids workflow issues when 3rd party applications create zero-length files (place-holders) as a part of their file transfer process.
- SCC MediaFactory 9 channels that output files to folders now provide the ability to individually override the maximum file length parameter, which is initially set globally for all channels within MediaFactory application preferences.

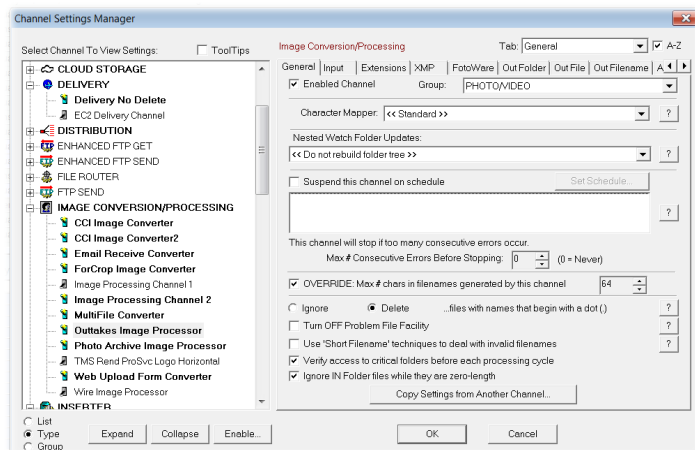
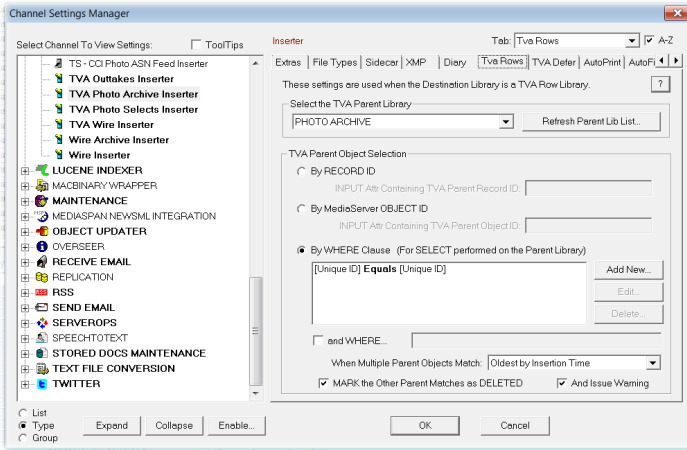


Image Conversion Channel (Enhanced)

- SCC MediaFactory 9 Image Conversion channels now provide support for converting from CMYKA and RGBA PSD formatted images.
- SCC MediaFactory 9 Image Conversion channels now allow the use of a Character Mapper during the creation of the output filename.
- SCC MediaFactory 9 Image Conversion channels now enhance the AutoRoute by FileName function, allowing output file routing to occur either before or after any filename AutoFill operations have occurred.

Inserter Channel (Enhanced)

- SCC MediaFactory 9 Inserter channels now provide an enhanced TVA record insertion mode which, in the case of duplicate parent records, allows either the newest or the oldest parent record to be defined as the matching object and the other optionally marked for deletion.



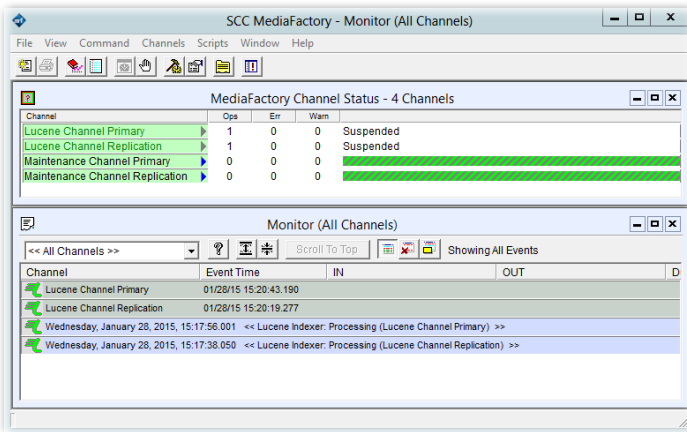
- SCC MediaFactory 9 Inserter channels now provide a TVA Defer function, which allows the insertion of TVA records to be deferred and retried at a later time when a matching parent record can not be found at the first attempt. Deferred TVA records can be retried at intervals up to 60 minutes for a configurable number of days after the first insertion attempt.

Delivery Channel (Enhanced)

- SCC MediaFactory 9 Delivery channels support two new Delivery functions - Delivery Issuer and Delivery Issuer Email.
- Delivery Issuer allows the login name of the user that issued the delivery command to be included in the delivery output. For example records could be delivered to a target folder named automatically with the users name.
- Delivery Issuer Email allows the email address of the user that issued the delivery command to be automatically extracted from Active Directory and included in the delivery output for use in downstream processing.

Maintenance Channel (Enhanced)

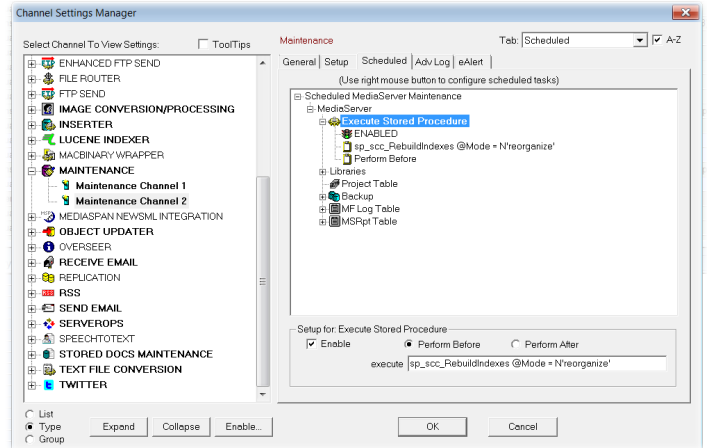
- SCC MediaFactory 9 now allows multiple Maintenance channels to be scheduled for parallel operation on multiple libraries within a single MediaServer 9 system or on libraries within multiple MediaServer 9 systems, greatly reducing the total amount of time for library maintenance tasks to complete.



- SCC MediaFactory 9 maintenance channels can now be created individually per library or for groups of libraries, and scheduled to run in parallel.
- When SCC MediaFactory 9 is connected to multiple MediaServer 9 systems, e.g. Publisher and Subscriber

(Replication) servers, it is now possible to schedule multiple maintenance channels to operate on both servers in parallel, again shortening the overall maintenance window.

- SCC MediaFactory 9 maintenance channels now support new Online and Reorganize SQL index maintenance modes, which avoid table locking and minimize the possibility for conflicts with other processes that may be accessing the SCC MediaServer 9 database at the same time.



- SCC MediaFactory 9 maintenance channels include new MFLog and MSReport purge routines, reducing significantly the amount of time taken to truncate very large tables.

Replication Channel (Enhanced)

- SCC MediaFactory 9 Replication channels now support the synchronization of Object Level Access tokens within records replicated between Publisher to Subscriber servers.
- SCC MediaFactory 9 Replication channels now support the synchronization of user and role level Object Access permissions between Publisher and Subscriber servers.

Cloud Storage Channel (Enhanced)

- SCC MediaFactory 9 Cloud storage channels now include support for Amazon S3 blob storage. MediaServer 9 systems equipped with the Cloud storage module can now be configured to store high-resolution assets and/or high-resolution previews in either Windows Azure, or Amazon S3 containers, or in both at the same time.
- SCC MediaFactory 9 Cloud storage services now incorporate the Azure SDK 2.5 for compatibility with current Microsoft Windows Azure services.

